



**ALEX EVANS**

**MCT**  
MODELS



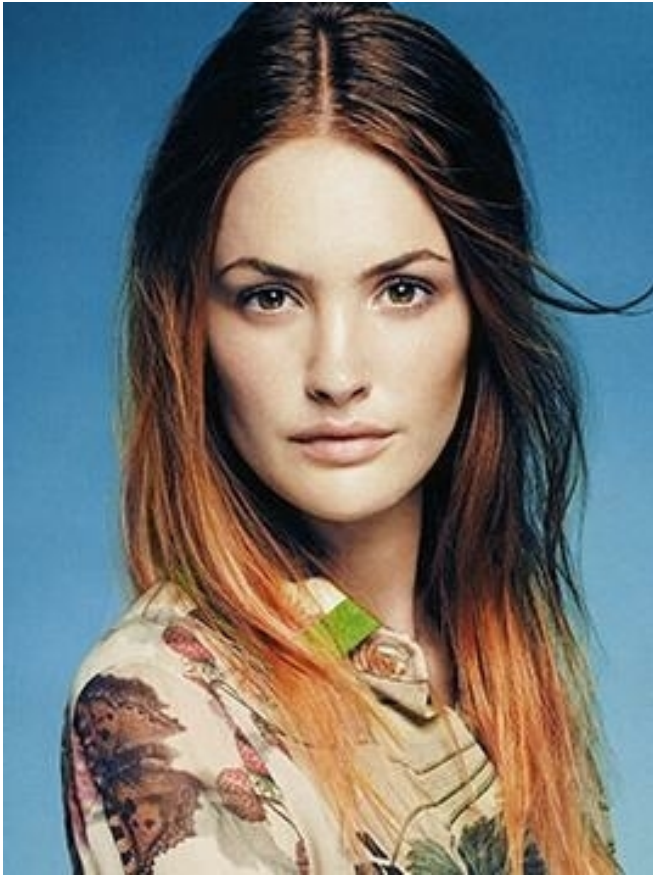
**ALEX EVANS**

**MCT**  
MODELS



ALEX EVANS

MCT  
MODELS



**FRONT COVER:**  
Lexie Sleeveless Dress  
see page 24

**THIS PAGE:**  
Fair Trade Rocks Tee  
see page 46

**Creative Direction:** Safa Minney  
**Photography:** Safa Minney and Ozi Caspi  
**PA/Prop Styling Assistant:** Mimi Alagide  
**Models:** Eleanor (Len's), Ana Claudia (MOT London), Lenka (Len's), Alex Evans (Nina),  
Christina Lundholm (Select)  
**Hair and Make-up:** Lou Dartford, Jo-Ann Deherby  
**Styling:** Andie Redman  
**Graphic Design:** Bethany Wray  
**Reprographics:** Tim Norman @ Invisible Inc Creative  
**Product Photography:** Heart Studios  
**Prints:** Westdale Press  
**Production:** Jeremy Hosking, Safa Minney, Bethany Wray, Mia Madril, Jimmy Hume, Jo Wilson, Beth Valtant, Eleanor Watters, Roxy Rocks-Engelman & Nathalie Kurucz  
**Thanks to:** RNS Garden, Wooley, Oria Kieley, Phil King, Geetie Singh, Stuart Raitrick, Alex Nicholls, Debbie Issacs, Liz Hitchcock, Mark Hooger, CJ Wilson, Ashley Daniels, Christine Genn, Simon Raitrick, Oikocredit, Shared Interest & Root Capital.  
People Tree Ltd, trading as People Tree, is registered in England and Wales, company no. 2949366. VAT No. 766 791 083.  
Registered address: People Tree, 5 & 9 Huguenot Place, 17A Heneage Street, London E1 5LN  
Email: people@peopletree.co.uk  
Telephone Number: +44 (0)20 7042 8900 or 0845 450 4395 (local rate)  
  
\* Free second class delivery and free returns applies to UK orders only, including Northern Ireland, Isle of Man, Isle of Wight and Channel Islands. Free first class delivery applies to all orders over £15 after all discounts have been applied. Please see order form on page 84 for delivery information.





**ALEX EVANS**

**MCT**  
MODELS