



ANNA BREWSTER

MCT
MODELS



ANNA BREWSTER

MCT
MODELS



This page, right-hand, diamond cuff, left hand, diamond bracelet, by CARTIER, both at Sotheby's

PRACY slip, £2,900, £2,900 (net.com)

Opposite page, vintage necklace, at Sotheby's

LEVIS T-shirt, £30 (levis.com)

Hair by Hiroshi Matsushita using Kiehl's. Make-up by Claire Peard at Carin using Estée Lauder. Nails by Sabrina Gayle at The Red Group using Chanel Le Dix. Set design by Nicola Bell, stylist's assistant. Olivia Jones

All jewellery from Sotheby's London Fine Jewels sale from 11am on 5 June. Price estimates range from £1,000 to £200,000. More information at sothebys.com/jewellery



"I think that everyone who worked in fashion at that time knew a photographer who was in the wrong"

[modelling]," she says. "It just happened." It was an era of super-models, super-photographers and super-lux photo shoots. Did she ever feel vulnerable? "I've definitely been looked for jobs where there was an element of nudity involved that I've not been comfortable with. But I felt like I couldn't say no because I was on the job and I couldn't stand up and say, "I'm not happy with this." I think that everyone who worked in fashion at that time knew a photographer who was in the wrong."

Though Brewster regularly sits front row at Saint Laurent and Chanel shows, she's keen to point out that she doesn't model for a living any more. The model-to-actor jump is historically a

in both fields and I have nothing to be ashamed of," she says conviction, though she also mentions she doesn't feel it proper 'actor actor'. "I'm too silly for that."

She's happy to be back 'home' in London. She lives in a with her *Versace* co-star Alex Vlahos (when I raise an eye she buries her head in her arm and moans, "no") and spends watching *The Great British Sewing Bee* on telly, going to that shall not be named, and eating at *Julienne* in St Newington. Her styness gets the better of her when she's ogised in the street. "Ground, swallow me up," she laughs. "social aspect is something that I am tackling, but being si

PHOTOGRAPH BY SOOTHEBY'S



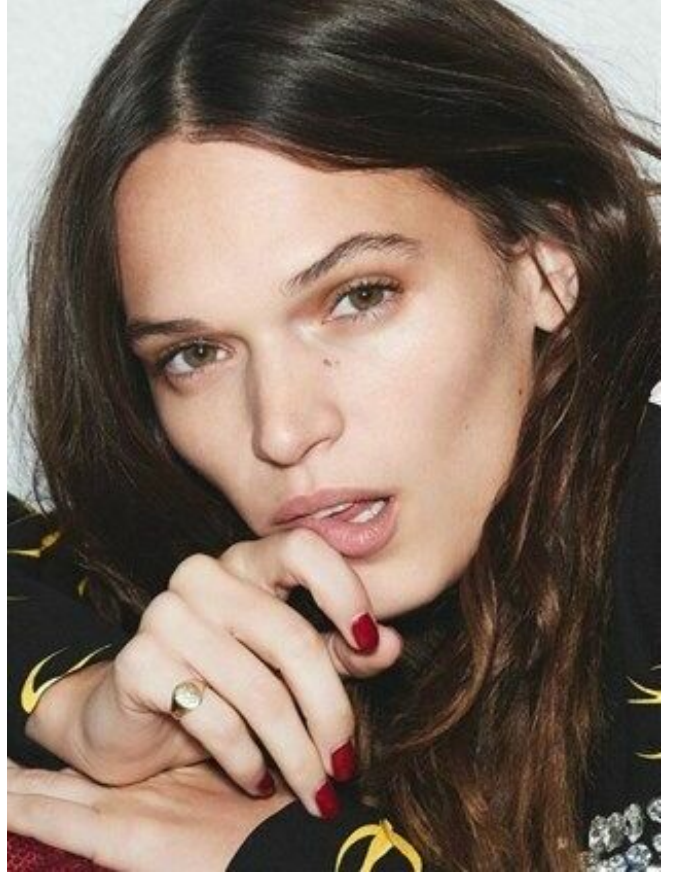
PRACY slip, £150, £1,000 (net.com) fashion.com

Opposite page, diamond earrings by SOUFERFOR, bangle by CARTIER, vintage 1940s bracelet, all at Sotheby's

ACNE dress, £1,300 (acnestudio.com)

ANNA BREWSTER

MCGT
MODELS



Modestyle



PHOTOS DE DANSON

modulnreano 71



PLAQUE COUTURE
 À GAUCHE ANNA
 BLOUSE EN COTON À
 MANCHES SOUFFANTES
 VOLANTES, KENDO.
 JUPE DROITE, ONE STEP.
 CEINTURE EN CUIR.
 HERMÈS.

MAILLE EN DRO
 À DROITE ANNA
 PULL EN CACHEMIRE.
 MAISON ULIENS.
 JUPE FUSÉE, ROCHAS.
 ADITHIR, PULL EN
 MAILLE ET PANTALON
 EN DRAP DE LAINE.
 L'ENSEMBLE ÉTRO.
 DREBY, ADIRY.

ANNA BREWSTER

MCT
 MODELS



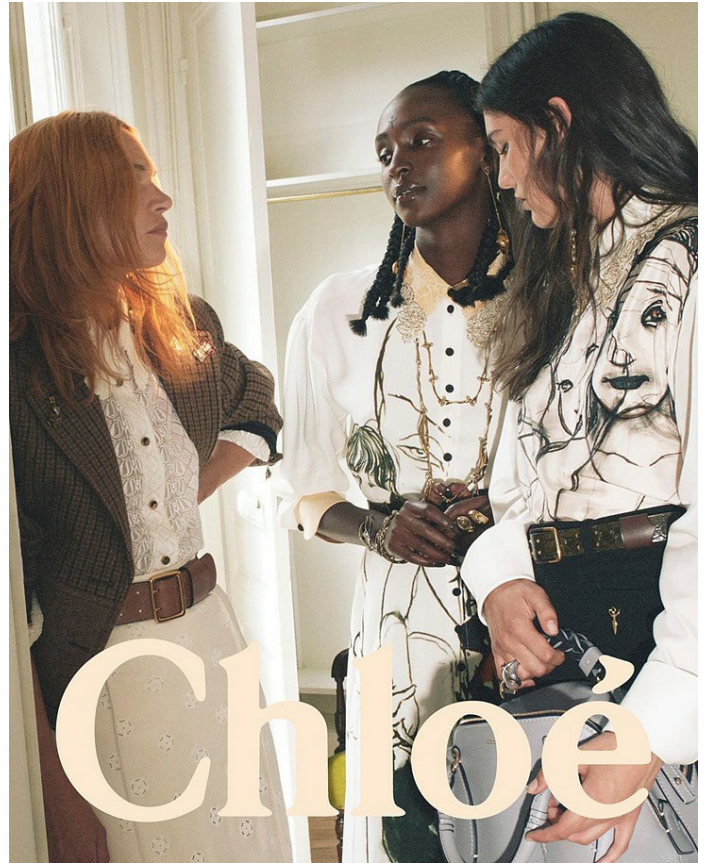
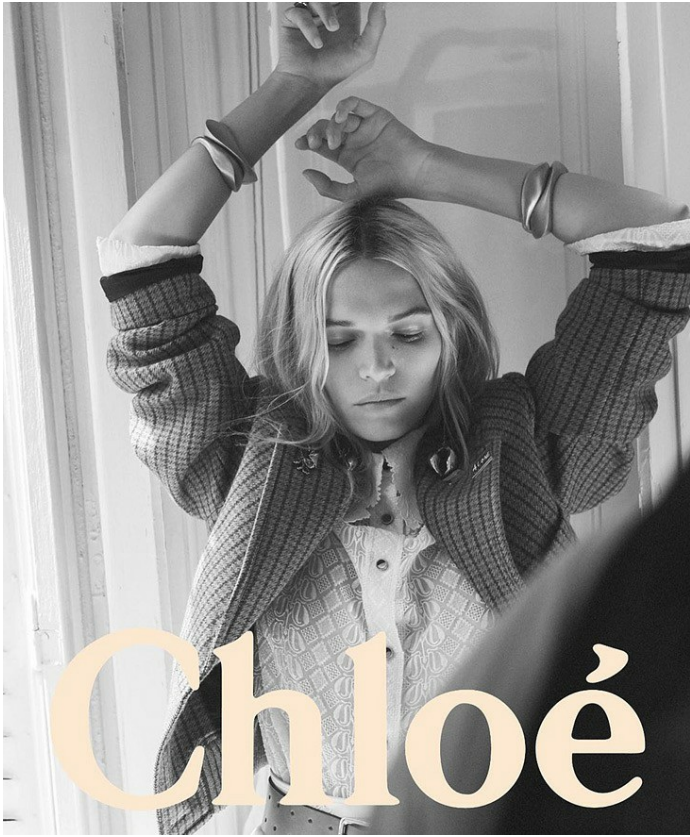
ANNA BREWSTER

MCT
MODELS



ANNA BREWSTER

MCT
 MODELS



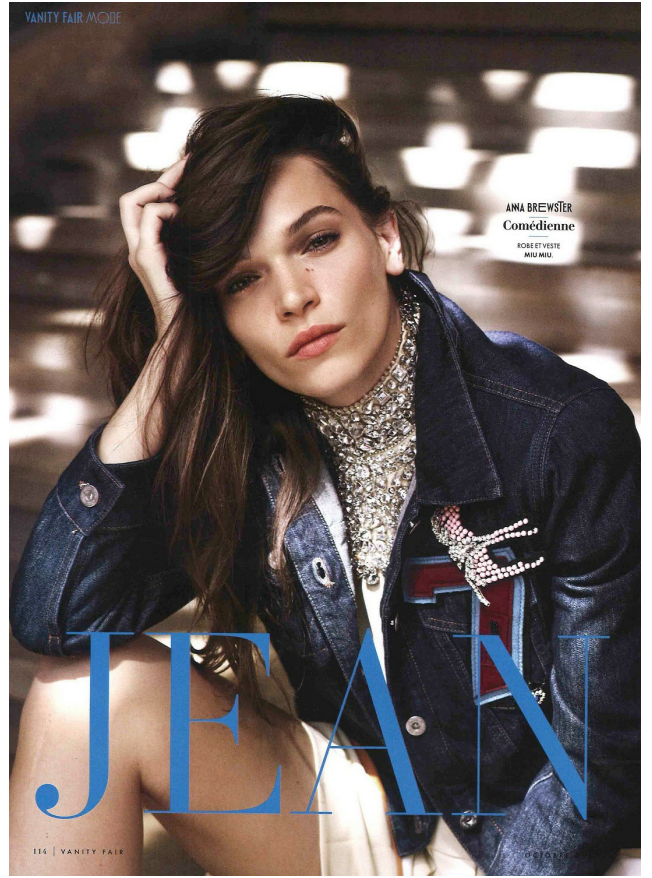
ANNA BREWSTER

MCT
MODELS



EMBROIDERED
SILK-ORGANZA
BLUSSE.
EMBROIDERED
SILKON GILET.
WOVEN TWEED
SHIRT. ALL FOR
ALL BY CHANEL
HAUTE COUTURE

Anna Brewster is good at keeping secrets. The 30-year-old actress stayed quiet for MONTHS about her role in the latest Star Wars film, where she plays badass bounty hunter Bazine Natal. Her most terrifying moment? Having to make up an alien language for her character on the spot. "There's nothing like having Harrison Ford harking around [on set] to put on the pressure." She splits her time between south London and Paris, where she's currently filming season 2 of the French cult TV hit *Visa pour l'Inde*. Anna plays Louis XIV's mistress, Madame de Mantes, a flamboyant gambler with a razor-sharp wit. When she's off-duty, you'll find her working on her specialties — her favorite is one she made of David Hockney's *A Rigger Splash*.



VANITY FAIR MOJE

ANNA BREWSTER
Comédienne
ROBET VESTE
MID MID.

ANNA BREWSTER

M&T
MODELS



Modestyle

CHA BADA BADA

ROMANCE À DEAUVILLE. ALLURE NONCHALANTE ET SÉDUCTION... UN PARFAIT VESTIAIRE DE RENTRÉE POUR UNE RÉINTERPRÉTATION DU FILM CULT DE LELOUCH "UN HOMME ET UNE FEMME". ÉLÉGANTE VARIATION AVEC LA COMÉDIENNE ANNA BREWSTER.

PHOTOS DE DARRON / DE ALCAZON, ÉRIQUE CLEMENTE / MODELES ANNA BREWSTER © NEXT PAGES ET ARTHUR GOSSE © UP PAGES

madmichou 67

ERIQUE CLEMENTE
 ANNA BREWSTER
 COSTUME EN SOIE
 ET LAIN. PORTE
 RUBIN PAILLÉ
 EN CACHEMIRE.
 L'ENSEMBLE
 GIORGIO ARMANI.
 ANNA BREWSTER
 EN CORSAI PORTÉ
 SUR UN TISSU
 EN TAILLE DE
 SOIE BRÉSILIENNE
 DE STAGAL.
 L'ENSEMBLE DIOR.

ANNA BREWSTER





ANNA BREWSTER

