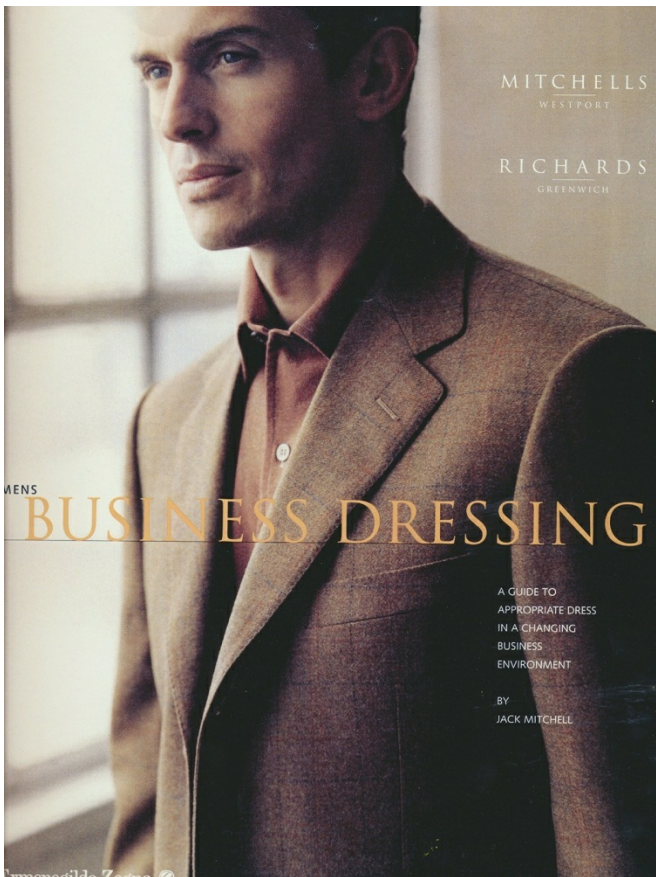
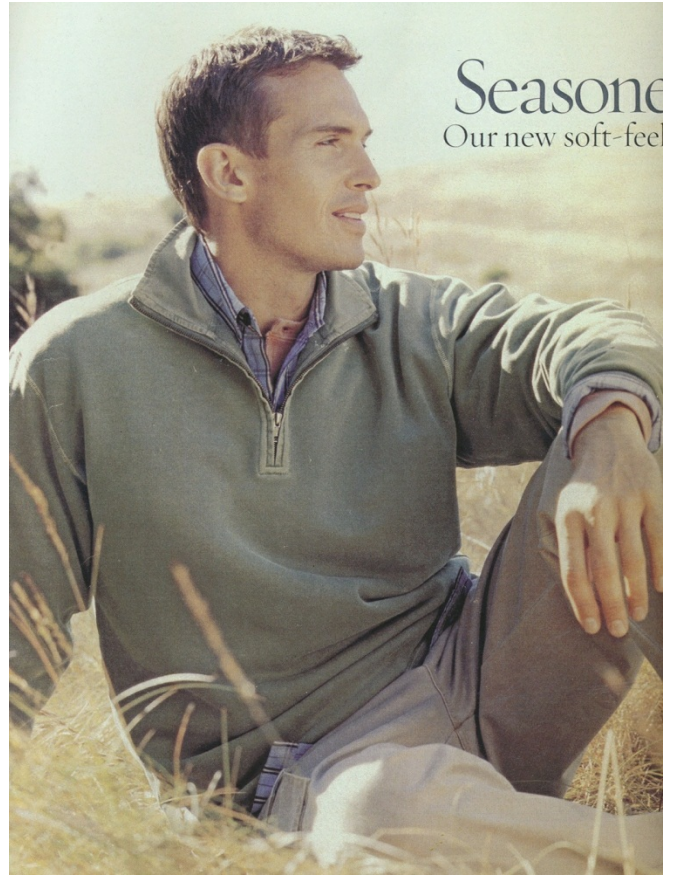


GARY ALEXANDER





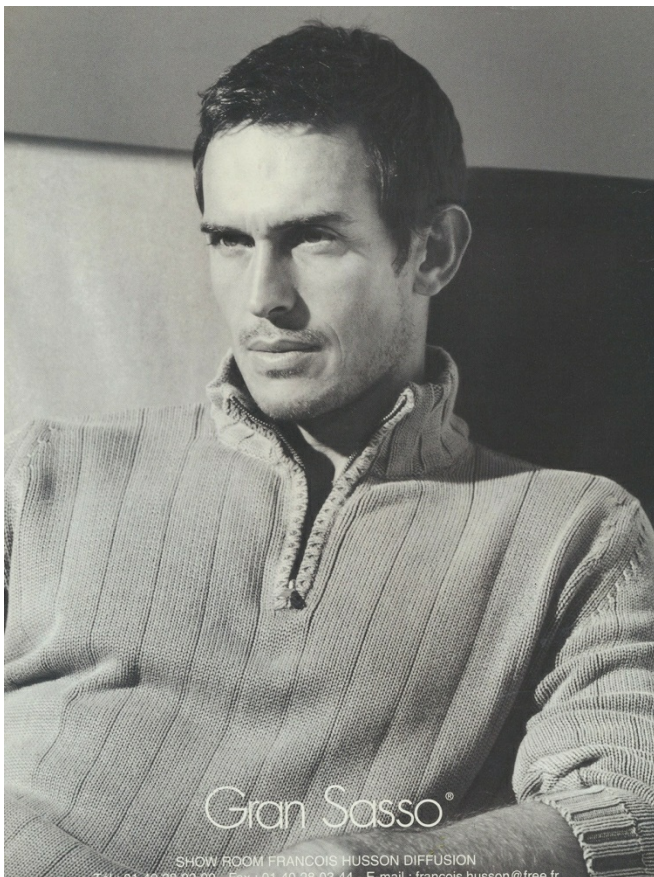
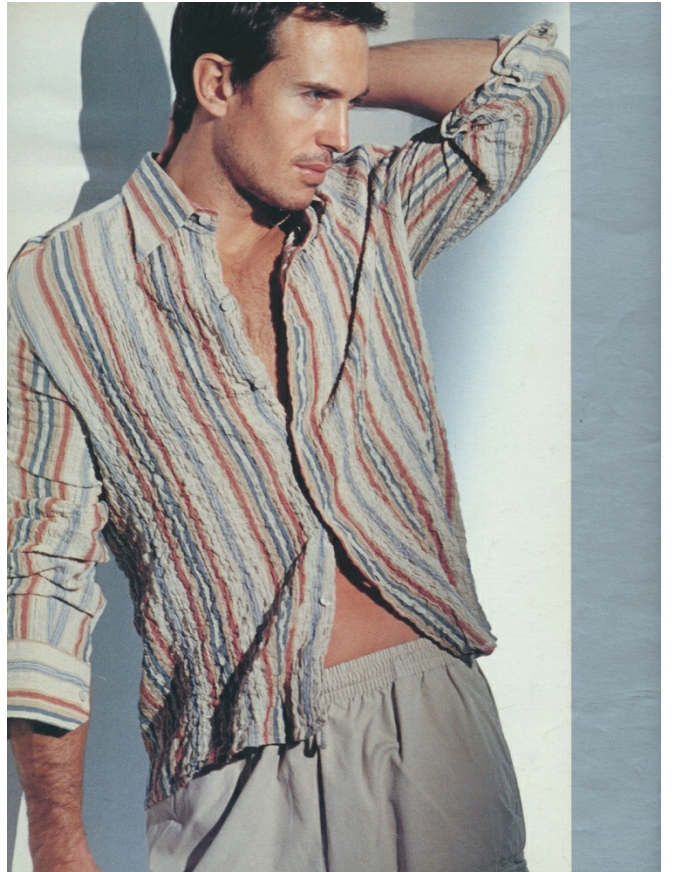
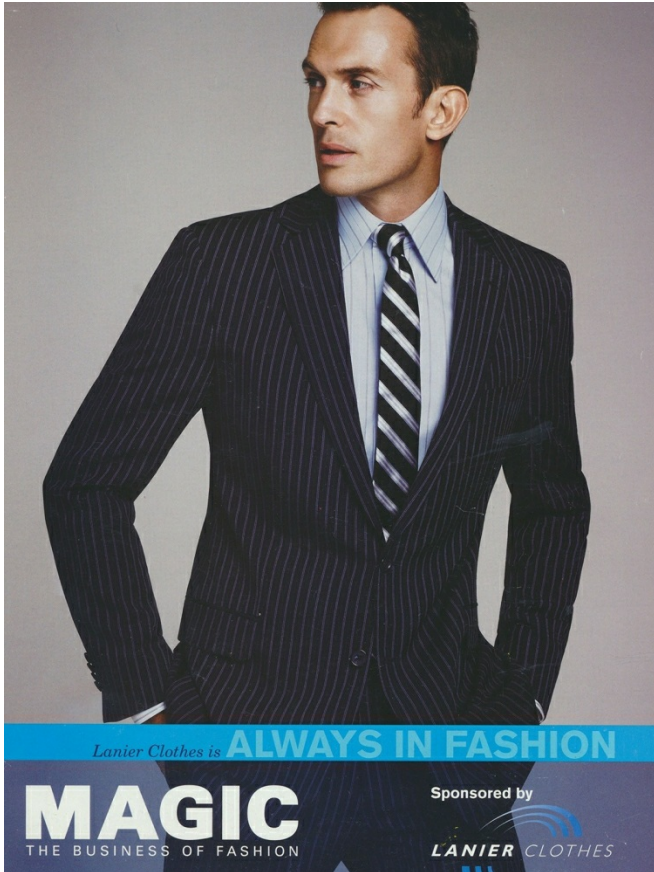
GARY ALEXANDER

MGT
MODELS



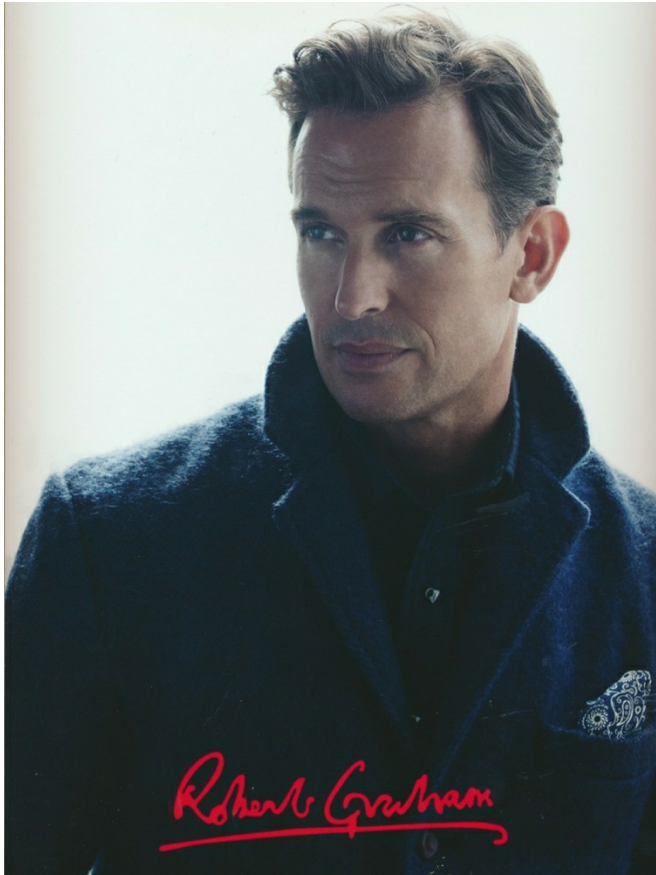
GARY ALEXANDER

MCT
MODELS



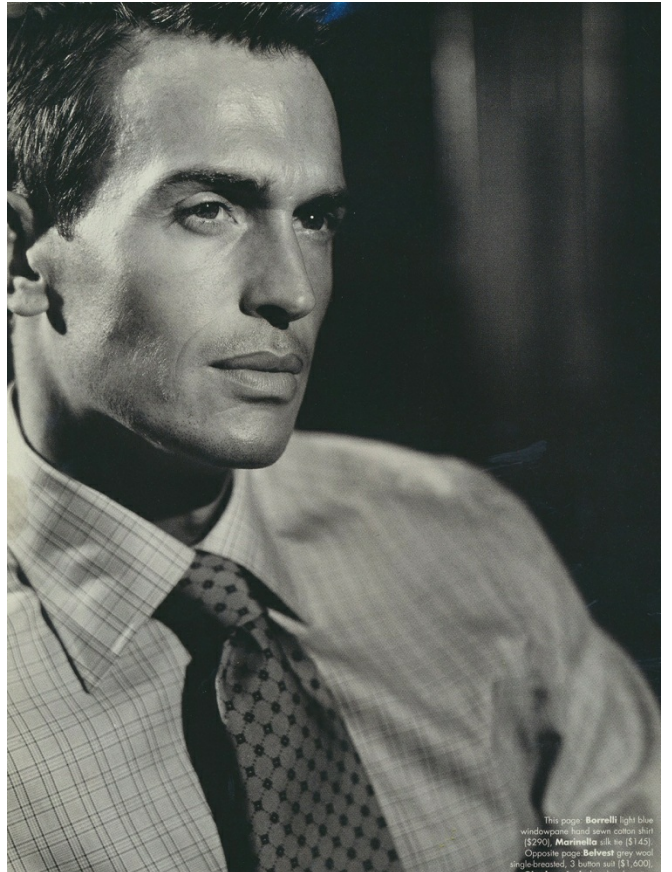
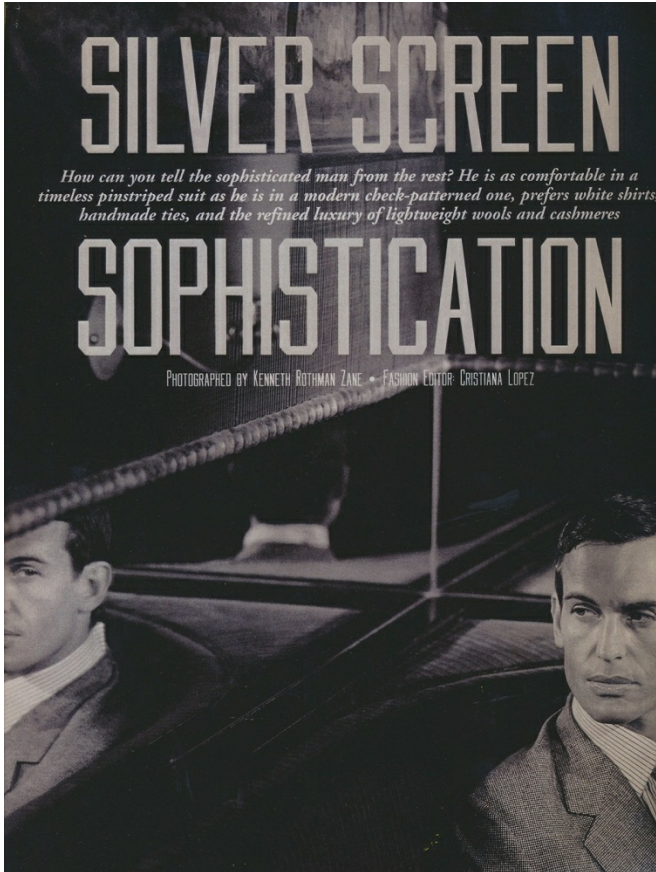
GARY ALEXANDER

MCT
MODELS



GARY ALEXANDER

MCGT
MODELS



GARY ALEXANDER

MCT
MODELS



KEN VAREY
Town and Country wear

While country clothing is made to last, it is also wearable, comfortable and ultimately stylish.

Photography: Sarah Valentine

Opposite page: Man One Him: Schaffel Purrington Tweed Blazer £549.95, Look Dorothea Tan £235
Her: Schaffel Lady Clafie Midlight £129.95, Doherty Rooming Slim Brige Mink £79, Doherty Cane Waist £135
Him: Brook Towner Longwool £189, Barbour Newmont Tall Stone £79.95, Floral Silk Sock £19.95, Brook Towner Portland Waistcoat £64.95
1. Barbour Kemp's Wax Navy £279, Barbour Kniver Fairisle Crew Forest Green £89.95, Barbour Molekins Lout £74.95, Kiliman Walnut £265.00, Thim Sock Blackthorn £40.99
2. Her: Barbour Bartlett Quilted Wax Rustic £229, Barbour Marchmont Rosewood £79.95, Barbour Tack Shirt Warm Pearl £69.95, Kiliman Walnut Doherty £135, Doherty Kenna Walnut Bag £179
Him: Barbour Cowlridge Rustic £229, Barbour Kniver Fairisle Crew Ruby £89.95, Doherty Westcot £149, Barbour Wax Leather Mail Bag Olive £179
3. Her: Doherty Longford Black £135, Barbour Bahamton Jacket Berry £249, Doherty Chamomile White £39

KEN VAREY
Town and Country wear

JOIN THE COUNTRY CLUB

BrooksEase Suiting
A Prime Investment

BROOKSEASE® SUITS
Innovative suits designed for fit, comfort and shape retention. Tailored from wrinkle-resistant stretch wool. Dry clean. Made in the USA. Available in expanded sizes.

Jackets: Welt chest pockets and inset flap pockets. Back center vent. Fully lined.
Regular: 36-46, 48, 50, 52, 54, 56
Short: 36-42, 44; Long: 39-46, 48, 50, 52, 54, 56; Extra-long: even sizes 42-56, 8-120

A. Two-button classic: Darted and slightly shaped through chest. Solids: Navy, tan, grey or olive. Pinstripes: Navy or grey. (257K)

B. Three-button sack: Undarted fuller through chest. Higher armholes. Solids: Navy or grey. (261K) Also available: Three-button classic. Darted and slightly shaped through chest. High-roll lapel. Solids: Navy or grey. Also available in black. (262K)

Trousers: Slightly relaxed fit through hip and leg. Gradual taper at hem. Lined to the knee.
Regular: 30-32; Short: 30-38; Long: 33-32. \$178

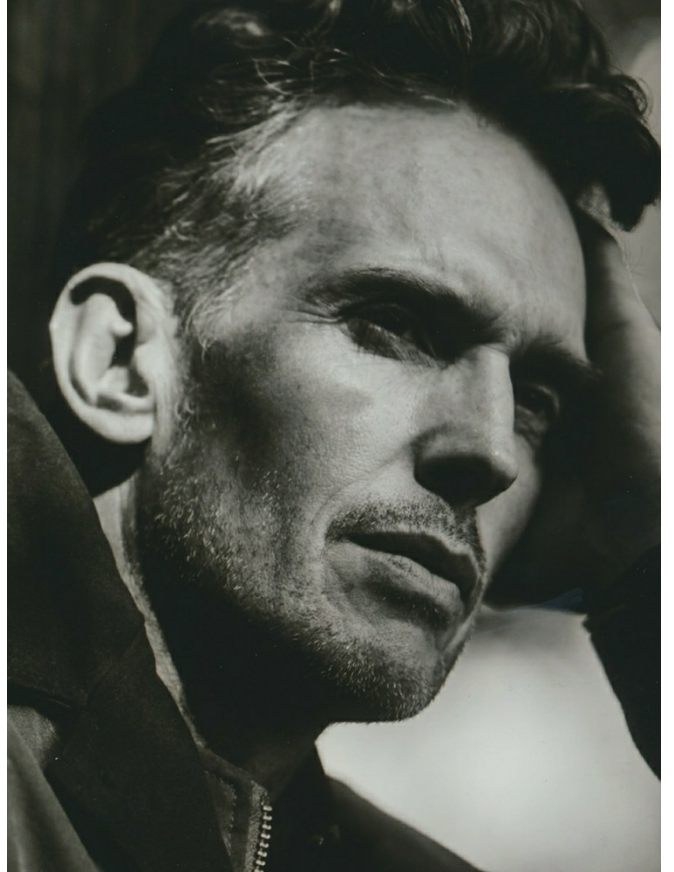
C. Pleat front: Navy, tan, grey or olive. Also available in black. Pinstripes: Navy or grey. (259K)

D. Plain front: Solids: Navy or grey. Also available in black. (258K)

navy
tan
grey
olive
navy pinstripe

GARY ALEXANDER

MO&T
MODELS



GARY ALEXANDER